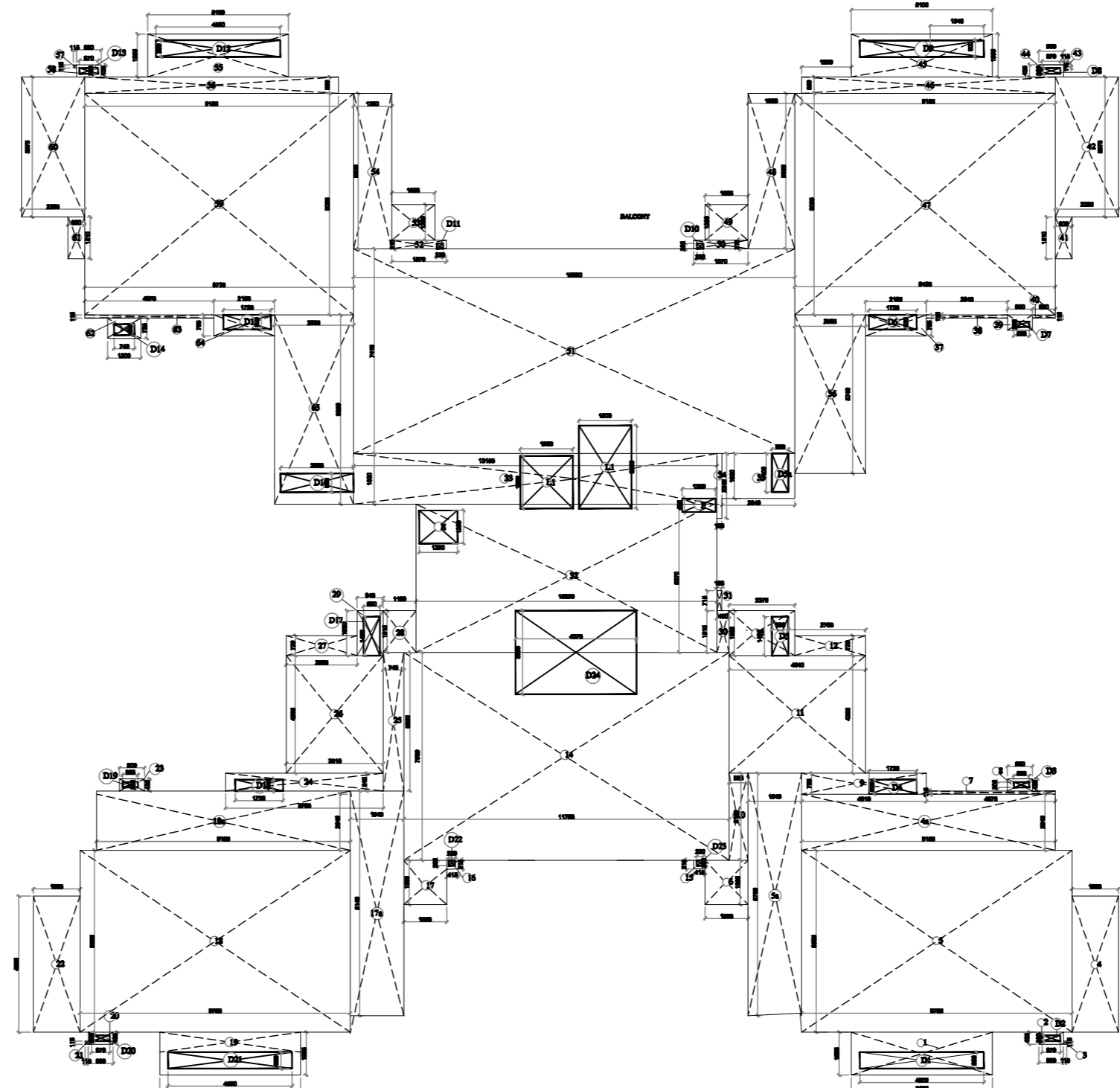


TYPICAL FLOOR PLAN
(2nd,6th To 9th floor)

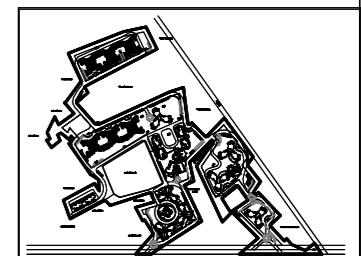


AREA CALCULATION

AREA CALCULATION

Covered Area Calculation Of				Deduction Area Calculation Of			
TOWER - D4 TYPICAL FLOOR (2nd, 6th. To 9th.)				TOWER - D4 TYPICAL FLOOR (2nd,6th. TO 9th.)			
S.NO.	LENGTH	WIDTH	AREA	S.NO.	LENGTH	WIDTH	AREA
1	5.100	1.555	7.931	D1	0.600	4.500	2.700
2	0.900	0.435	0.392	D2	0.670	0.200	0.134
3	0.115	0.115	0.013	D3	0.555	0.200	0.111
4	1.685	4.925	8.298	D4	1.725	0.525	0.108
5	11.725	8.625	101.128	D5	0.600	1.400	0.840
6	1.970	1.605	3.162	D5a	0.600	1.400	0.840
7	5.275	0.115	0.607	D6	1.725	0.525	0.906
8	0.900	0.435	0.392	D7	0.555	0.200	0.111
9	6.450	0.755	4.870	D8	0.670	0.200	0.134
10	0.850	3.150	2.678	D9	4.500	0.600	2.700
11	4.940	4.265	21.069	D10	0.230	0.200	0.046
12	2.795	0.720	2.012	D11	0.230	0.200	0.046
13	2.375	1.630	3.871	D12	4.500	0.200	0.900
14	11.750	7.530	88.478	D13	0.670	0.200	0.134
15	0.950	0.370	0.352	D14	0.740	0.400	0.296
16	0.950	0.370	0.352	D15	1.725	0.525	0.906
17	1.970	1.605	3.162	D16	2.635	0.680	1.792
18	11.725	8.740	102.477	D17	0.600	1.400	0.840
19	5.100	1.555	7.931	D18	1.725	0.410	0.707
20	0.900	0.435	0.392	D19	0.555	0.200	0.111
21	0.115	0.115	0.013	D20	0.670	0.200	0.134
22	1.685	4.925	8.299	D21	4.500	0.600	2.700
23	0.900	0.435	0.392	D22	0.230	0.200	0.046
24	5.705	0.640	3.651	D23	0.230	0.200	0.046
25	0.745	5.020	3.740	D24	4.375	3.085	13.278
26	3.510	4.265	14.970	F	1.200	0.485	0.582
27	2.565	0.720	1.847	L1	1.900	3.000	5.700
28	1.190	1.515	1.803	L2	1.900	1.900	3.610
29	10.890	2.360	25.700	E	1.890	1.200	1.668
30	0.450	1.150	0.518	TOTAL DEDUCTION AREA = 42.125			
31	0.185	0.715	0.132				
32	15.890	3.010	47.829				
33	13.155	1.830	24.074				
34	2.345	1.850	4.338				
35	1.810	1.400	2.534				
36	5.740	2.565	14.723				
37	2.195	0.755	1.657				
38	2.945	0.115	0.339				
39	0.900	0.435	0.392				
40	0.830	0.115	0.095				
41	0.600	1.510	0.906				
42	2.285	5.075	11.596				
43	0.115	0.115	0.013				
44	0.900	0.435	0.392				
45	5.100	1.555	7.931				
46	9.185	0.600	5.511				
47	9.435	8.025	75.716				
48	5.635	1.690	9.515				
49	1.555	1.290	2.006				
50	1.970	0.115	0.227				
51	15.980	7.415	118.492				
52	1.970	0.315	0.621				
53	1.555	1.290	2.006				
54	5.630	1.390	7.826				
55	5.100	1.555	7.931				
56	9.185	0.600	5.511				
57	0.115	0.115	0.013				
58	0.900	0.435	0.392				
59	9.735	8.025	78.123				
60	2.285	5.075	11.596				
61	1.510	0.600	0.906				
62	1.200	0.735	0.882				
63	4.675	0.115	0.538				
64	2.195	0.755	1.657				
65	2.865	6.850	19.625				

AREA = 886.537
 TYPICAL FLOOR AREA = 886.537 SQ.M.
 DEDUCTION AREA = 42.125 SQ.M.
 TYPICAL AREA - DEDUCTION = 886.537 - 42.125 = 844.412 SQ.M.
 TOTAL AREA = 844.412 x 5 = 4222.06 SQ.M.



KEY PLAN
 PROJECT :
 PARSVNATH EXOTICA
 PROPOSED GROUP HOUSING
 at Village Wazirbad
 Sector 53, Gurgaon.

STATUS
 COMPLETION DRAWING

DRAWING TITLE :
 TYPICAL FLOOR PLAN
 (2nd,6th to 9th floor)
 3-BED UNIT_4 TO A CORE
 TOWER D6

DEALT BY :
 CHECKED :
 DATE - 05-05-2017 SCALE 1:100
 DRAWING NO. NORTH

ARCHITECT SIGN
 OWNER SIGN

Parsvnath Developers Ltd.
 PARSVNATH METRO TOWER,
 SHAHDARA METRO STATION
 SHAHDARA DELHI-110032

S.NO.	TYPE	WIDTH	CALL	LEVEL	DESCRIPTION
1	D1	1880	-	2170	Bedroom door
2	D2	1880	-	2170	Bedroom door
3	D3	880	-	2170	Bedroom door
4	D4	880	-	2170	Living room door
5	D5	1880	-	2170	Bedroom door
6	D6	1880	-	2170	Living room door
7	D7	1880	-	2170	Bedroom door
8	D8	880	-	2170	Bedroom door
9	D9	880	-	2170	Bedroom door
10	D10	880	-	2170	Bedroom door
11	D11	1276	880	2280	Living room
12	D12	880	880	2280	Bedroom
13	D13	880	880	2280	Bedroom
14	D14	880	880	2280	Bedroom
15	D15	880	880	2280	Bedroom
16	D16	880	880	2280	Bedroom
17	D17	880	880	2280	Bedroom
18	D18	880	880	2280	Bedroom
19	D19	880	880	2280	Bedroom
20	D20	880	880	2280	Bedroom
21	D21	880	880	2280	Bedroom
22	D22	880	880	2280	Bedroom
23	D23	880	880	2280	Bedroom
24	D24	880	880	2280	Bedroom
25	D25	880	880	2280	Bedroom
26	D26	880	880	2280	Bedroom
27	D27	880	880	2280	Bedroom
28	D28	880	880	2280	Bedroom
29	D29	880	880	2280	Bedroom
30	D30	880	880	2280	Bedroom
31	D31	880	880	2280	Bedroom
32	D32	880	880	2280	Bedroom
33	D33	880	880	2280	Bedroom
34	D34	880	880	2280	Bedroom
35	D35	880	880	2280	Bedroom
36	D36	880	880	2280	Bedroom
37	D37	880	880	2280	Bedroom
38	D38	880	880	2280	Bedroom
39	D39	880	880	2280	Bedroom
40	D40	880	880	2280	Bedroom
41	D41	880	880	2280	Bedroom
42	D42	880	880	2280	Bedroom
43	D43	880	880	2280	Bedroom
44	D44	880	880	2280	Bedroom
45	D45	880	880	2280	Bedroom
46	D46	880	880	2280	Bedroom
47	D47	880	880	2280	Bedroom
48	D48	880	880	2280	Bedroom
49	D49	880	880	2280	Bedroom
50	D50	880	880	2280	Bedroom
51	D51	880	880	2280	Bedroom
52	D52	880	880	2280	Bedroom
53	D53	880	880	2280	Bedroom
54	D54	880	880	2280	Bedroom
55	D55	880	880	2280	Bedroom
56	D56	880	880	2280	Bedroom
57	D57	880	880	2280	Bedroom
58	D58	880	880	2280	Bedroom
59	D59	880	880	2280	Bedroom
60	D60	880	880	2280	Bedroom
61	D61	880	880	2280	Bedroom
62	D62	880	880	2280	Bedroom
63	D63	880	880	2280	Bedroom
64	D64	880	880	2280	Bedroom
65	D65	880	880	2280	Bedroom