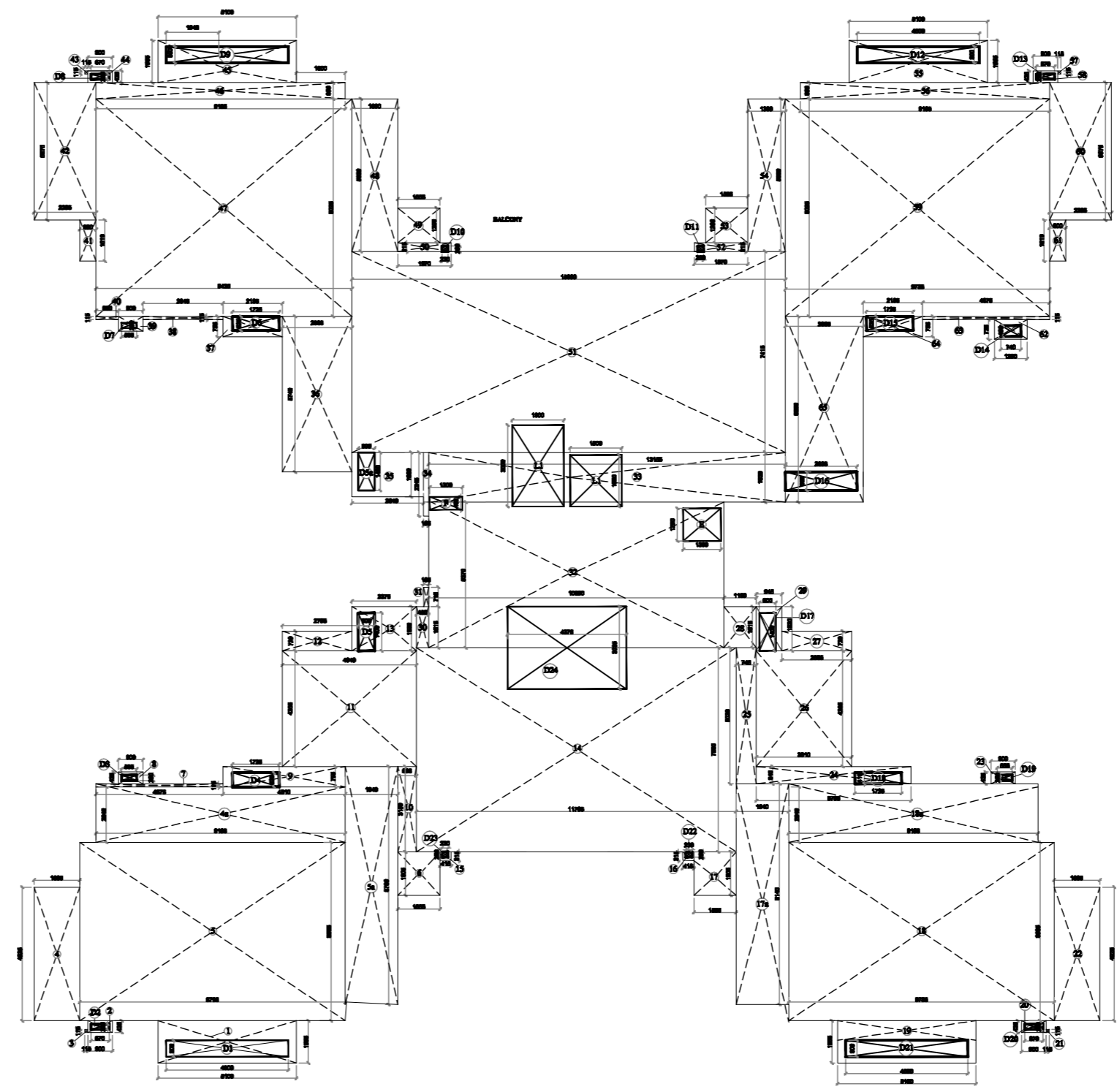


TYPICAL FLOOR PLAN
(2nd,6th To 14th floor)

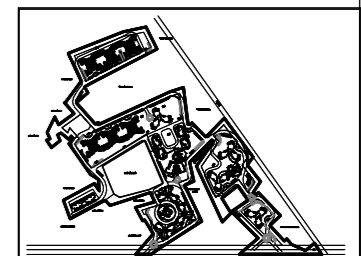


AREA CALCULATION

AREA CALCULATION

Covered Area Calculation Of				Deduction Area Calculation Of			
TOWER - D4 TYPICAL FLOOR (2nd, 6th. To 14th.)				TOWER - D4 TYPICAL FLOOR (2nd,6th. TO 14th.)			
S.NO.	LENGTH	WIDTH	AREA	S.NO.	LENGTH	WIDTH	AREA
1	5.100	1.555	7.931	D1	0.600	4.500	2.700
2	0.900	0.435	0.392	D2	0.670	0.200	0.134
3	0.115	0.115	0.013	D3	0.555	0.200	0.111
4	1.685	4.925	8.298	D4	1.725	0.525	0.108
5	11.725	8.625	101.128	D5	0.600	1.400	0.840
6	1.970	1.605	3.162	D5a	0.600	1.400	0.840
7	5.275	0.115	0.607	D6	1.725	0.525	0.906
8	0.900	0.435	0.392	D7	0.555	0.200	0.111
9	6.450	0.755	4.870	D8	0.670	0.200	0.134
10	0.850	3.150	2.678	D9	4.500	0.600	2.700
11	4.940	4.265	21.069	D10	0.230	0.200	0.046
12	2.795	0.720	2.012	D11	0.230	0.200	0.046
13	2.375	1.630	3.871	D12	4.500	0.200	0.900
14	11.750	7.530	88.478	D13	0.670	0.200	0.134
15	0.950	0.370	0.352	D14	0.740	0.400	0.296
16	0.950	0.370	0.352	D15	1.725	0.525	0.906
17	1.970	1.605	3.162	D16	2.635	0.680	1.792
18	11.725	8.740	102.477	D17	0.600	1.400	0.840
19	5.100	1.555	7.931	D18	1.725	0.410	0.707
20	0.900	0.435	0.392	D19	0.555	0.200	0.111
21	0.115	0.115	0.013	D20	0.670	0.200	0.134
22	1.685	4.925	8.299	D21	4.500	0.600	2.700
23	0.900	0.435	0.392	D22	0.230	0.200	0.046
24	5.705	0.640	3.651	D23	0.230	0.200	0.046
25	0.745	5.020	3.740	D24	4.375	3.085	13.278
26	3.510	4.265	14.970	F	1.200	0.485	0.582
27	2.565	0.720	1.847	L1	1.900	3.000	5.700
28	1.190	1.515	1.803	L2	1.900	1.900	3.610
29	10.890	2.360	25.700	E	1.390	1.200	1.668
30	0.450	1.150	0.518	TOTAL DEDUCTION AREA = 42.125			
31	0.185	0.715	0.132				
32	15.890	3.010	47.829				
33	13.155	1.830	24.074				
34	2.345	1.850	4.338				
35	1.810	1.400	2.534				
36	5.740	2.565	14.723				
37	2.195	0.755	1.657				
38	2.945	0.115	0.339				
39	0.900	0.435	0.392				
40	0.830	0.115	0.095				
41	0.600	1.510	0.906				
42	2.285	5.075	11.596				
43	0.115	0.115	0.013				
44	0.900	0.435	0.392				
45	5.100	1.555	7.931				
46	9.185	0.600	5.511				
47	9.435	8.025	75.716				
48	5.630	1.690	9.515				
49	1.555	1.290	2.006				
50	1.970	0.115	0.227				
51	15.980	7.415	118.492				
52	1.970	0.315	0.621				
53	1.555	1.290	2.006				
54	5.630	1.390	7.826				
55	5.100	1.555	7.931				
56	9.185	0.600	5.511				
57	0.115	0.115	0.013				
58	0.900	0.435	0.392				
59	9.735	8.025	78.123				
60	2.285	5.075	11.596				
61	1.510	0.600	0.906				
62	1.200	0.735	0.882				
63	4.675	0.115	0.538				
64	2.195	0.755	1.657				
65	2.865	6.850	19.625				

AREA = 886.537
 TYPICAL FLOOR AREA = 886.537 SQ.M.
 DEDUCTION AREA = 42.125 SQ.M.
 TYPICAL AREA - DEDUCTION = 886.537 - 42.125 = 844.412 SQ.M.
 TOTAL AREA = 844.412 x 10 = 8444.12 SQ.M.



KEY PLAN
 PROJECT :
PARSVNATH EXOTICA
 PROPOSED GROUP HOUSING
 at Village Wazirabad
 Sector 53, Gurgaon.

STATUS
COMPLETION DRAWING

DRAWING TITLE :
TYPICAL FLOOR PLAN
 (2nd,6th to 14th floor)
3-BED UNIT 4 TO A CORE
TOWER D4

DEALT BY :
 DATE - 05-05-2017
 DRAWING NO.

ARCHITECT SIGN.

OWNER SIGN.

Parsvnath Developers Ltd.
 PARSVNATH METRO TOWER,
 SHAHDARA METRO STATION
 SHAHDARA DELHI-110032

DOOR-WINDOW SCHEDULE					
S.NO.	TYPE	WIDTH	CLL	LINTEL	DESCRIPTION
1	D1	1200	-	2170	Entrance door
2	D2	1000	-	2170	Bedroom door
3	D3	900	-	2170	Bedroom door
4	D4	800	-	2260	Utility room door
5	D5	780	-	2170	Toilet door
6	D6	1100	-	2170	Terrace door
7	D7	900	-	2170	fin
8	D8	900	-	2170	fin
1	DW1	3720	0	2260	Living room
2	DW2	2870	0	2260	Bedroom
3	DW3	1415	900	2260	Kitchen
4	DW4	3260	0	2260	Bedroom
5	DW5	2900	0	2260	Bedroom
6	DW6	3000	200	-	Entrance lobby
7	DW7	1285	200	2260	Bedroom
8	DW8	2080	0	2260	Bedroom
1	W1	2846	-	-	Dining room
2	W2	2916	-	-	Bedroom
3	W3	800	0	2260	Bedroom
4	W4	3570	600	2260	Living room
5	W5	1000	800	-	fin, lobby
6	W6	1500	-	-	fin
7	W7	1275	900	2260	Lift lobby
8	W8	680	900	2260	Lift lobby
9	W9	2825	-	-	fin
10	W10	800	900	2260	Study room
11	W11	1575	0	2260	Bedroom
12	W12	2400	-	-	Staircase
13	W13	1840	0	0	Bedroom
1	V1	800	800	2170	Toilet
2	V1T	800	800	2260	WC
3	V2	480	800	2170	WC
3	V2T	480	800	2260	WC
1	FD1	1100	-	2260	Fire door
2	FD2	1000	-	2260	Fire door
3	FDR	780	-	2260	Black room
1	S1	1800	800	2260	SHAFT OPENING
2	S2	800	800	2260	SHAFT OPENING
3	S3	885	800	2260	SHAFT OPENING
4	S4	885	800	2260	SHAFT OPENING