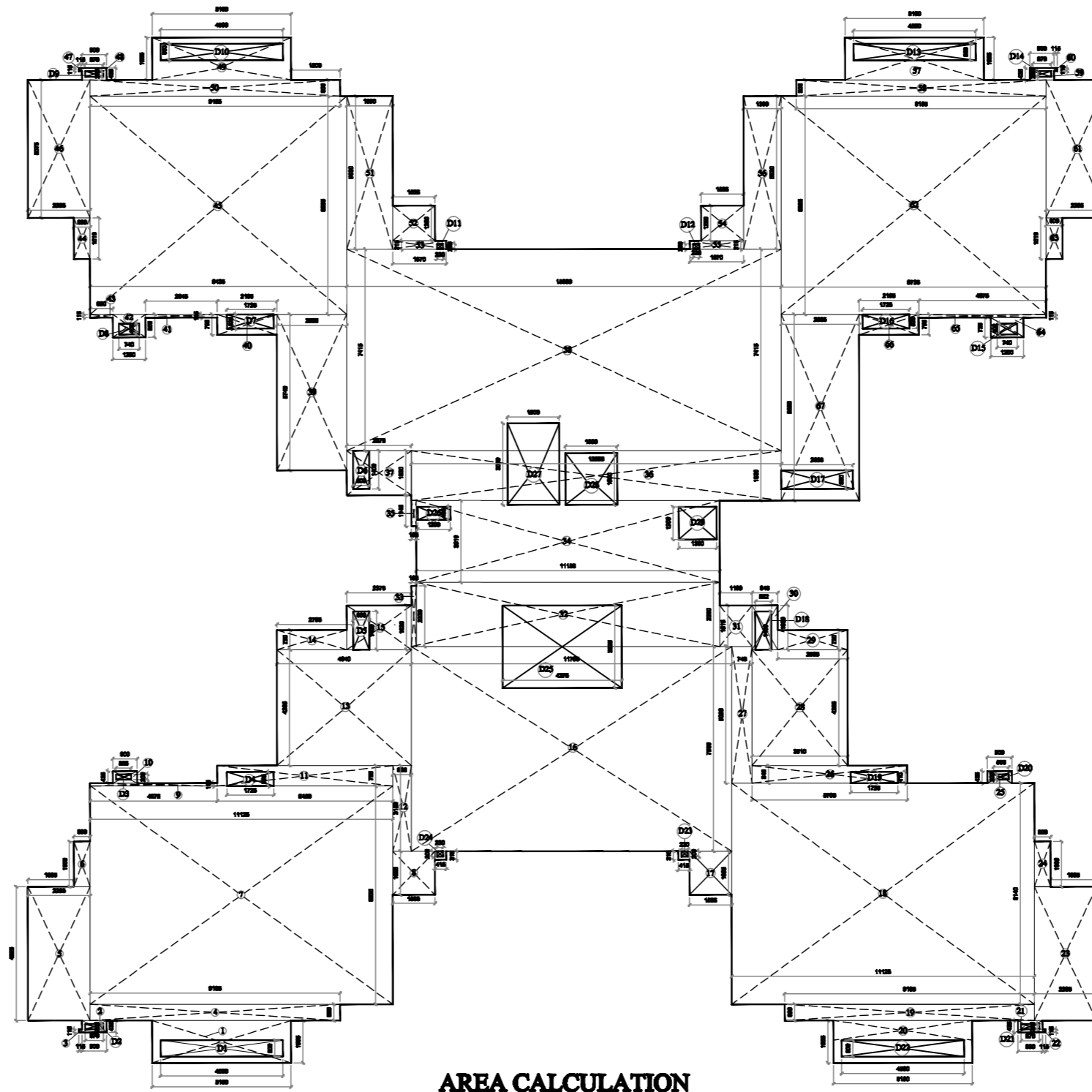


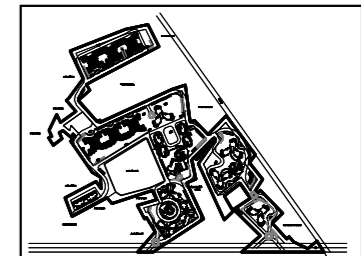
TYPICAL FLOOR PLAN  
(2nd,6th TO 14th floor)



AREA CALCULATION

Covered Area Calculation Of TOWER - D5 TYPICAL 2nd, 6th TO 14th floor			
S.NO.	LENGTH	WIDTH	AREA
1	5.300	1.555	7.991
2	0.900	0.435	0.392
3	0.115	0.115	0.013
4	9.185	0.600	5.511
5	2.285	4.925	11.254
6	0.600	1.660	0.996
7	11.125	8.025	89.278
8	1.555	1.605	2.494
9	4.675	0.115	0.538
10	0.900	0.435	0.392
11	6.450	0.755	4.870
12	0.685	3.150	2.158
13	4.940	4.260	21.049
14	2.795	0.720	2.012
15	2.375	1.630	3.872
16	11.785	7.530	88.742
17	1.555	1.605	2.494
18	11.125	8.140	90.558
19	9.185	0.600	5.511
20	5.300	1.555	7.991
21	0.900	0.115	0.104
22	0.115	0.115	0.013
23	2.285	4.925	11.254
24	0.600	1.660	0.996
25	0.900	0.435	0.392
26	5.705	0.640	3.651
27	0.745	5.020	3.744
28	3.510	4.260	14.932
29	2.565	0.720	1.847
30	0.945	1.630	1.540
31	1.190	1.515	1.803
32	11.155	2.860	31.902
33	0.185	2.230	0.413
34	11.155	3.010	33.577
35	0.185	1.145	0.212
36	13.625	1.830	24.867
37	2.375	1.630	3.871
38	15.980	7.415	118.492
39	1.565	5.740	8.972
40	2.195	0.755	1.657
41	2.645	0.115	0.304
42	1.200	0.850	1.020
43	0.830	0.115	0.095
44	0.600	1.510	0.906
45	9.435	8.025	75.718
46	2.285	5.075	11.594
47	0.115	0.115	0.013
48	0.900	0.435	0.392
49	5.100	1.555	7.991
50	9.185	0.600	5.511
51	1.690	5.630	9.511
52	1.555	1.290	2.006
53	1.970	0.315	0.621
54	1.555	1.290	2.006
55	1.970	0.315	0.621
56	1.890	5.630	10.660
57	5.100	1.555	7.991
58	9.185	0.600	5.511
59	0.900	0.435	0.392
60	0.115	0.115	0.013
61	2.285	5.075	11.594
62	9.735	8.025	78.123
63	0.600	1.510	0.906
64	1.200	0.735	0.882
65	4.675	0.115	0.538
66	2.195	0.755	1.657
67	2.865	6.850	19.623
TOTAL AREA			868.530
TOTAL COVERED AREA			824.445
TOTAL DEDUCTION AREA			44.085

Covered Area Calculation Of TOWER - D5 TYPICAL 2nd, 6th TO 14th floor			
S.NO.	LENGTH	WIDTH	AREA
D1	0.600	4.500	2.700
D2	0.670	0.200	0.134
D3	0.555	0.200	0.111
D4	1.725	0.525	0.906
D5	0.600	1.400	0.840
D6	0.600	1.400	0.840
D7	1.725	0.525	0.906
D8	0.740	0.400	0.296
D9	0.670	0.200	0.134
D10	4.500	0.600	2.700
D11	0.230	0.200	0.046
D12	0.230	0.200	0.046
D13	4.500	0.600	2.700
D14	0.670	0.200	0.134
D15	0.740	0.400	0.296
D16	1.725	0.525	0.906
D17	2.635	0.885	2.322
D18	0.582	1.400	0.815
D19	1.725	0.410	0.707
D20	0.555	0.200	0.111
D21	0.670	0.200	0.134
D22	4.500	0.600	2.700
D23	0.230	0.200	0.046
D24	0.230	0.200	0.046
D25	4.375	3.035	13.278
D26	1.200	0.485	0.582
D27	1.900	3.000	5.700
D28	1.900	1.900	3.610
D29	1.300	1.200	1.560
TOTAL DEDUCTION AREA			44.085



KEY PLAN  
PROJECT :  
PARSVNATH EXOTICA  
PROPOSED GROUP HOUSING  
at Village Wazirabad  
Sector 53, Gurgaon.

STATUS  
COMPLETION DRAWING

DRAWING TITLE :  
TYPICAL FLOOR PLAN  
(2nd,6th TO 14th floor)  
3-BED UNIT\_4 TO A CORE  
TOWER D5

DEALT BY : Jyogender CHECKED  
DATE - 06-06-2017 SCALE 1:100

DRAWING NO. NORTH

ARCHITECT SIGN.

OWNER SIGN.  
Parsvnath Developers Ltd.  
PARSVNATH METRO TOWER,  
SHAHADARA METRO STATION  
SHAHADARA DELHI-110032

DOOR-WINDOW SCHEDULE						
S.NO.	TYPE	WIDTH	CELL	LAYTEL	DESCRIPTION	
1	D1	1200	-	2170	Entrance door	
2	D2	1000	-	2170	Bedroom door	
3	D3	900	-	2170	Bedroom door	
4	D4	800	-	2360	Utility room door	
5	D5	750	-	2170	Toilet door	
6	D6	1100	-	2170	Terrace door	
7	D7	900	-	2170	fic	
8	D8	900	-	2170	Wife	
1	DW1	5720	0	2360	Living room	
2	DW2	2670	0	2360	Bedroom	
3	DW3	1415	900	2360	Kitchen	
4	DW4	3000	0	2360	Bedroom	
5	DW5	2600	0	2360	Bedroom	
6	DW6	3000	200	-	Entrance lobby	
7	DW7	1285	200	2360	Driver's room	
8	DW8	2080	0	2360	Bedroom	
1	W1	2845	-	-	Dining room	
2	W2	2810	-	-	Bedroom	
3	W3	800	0	2360	Bedroom	
4	W4	3670	800	2360	Living room	
5	W5	1000	800	-	Ent. lobby	
6	W6	1800	-	-	Bedroom	
7	W7	1275	900	2360	Lift lobby	
8	W8	800	900	2360	Lift lobby	
9	W9	2020	-	-	Lift lobby	
10	W10	900	900	2360	Study room	
11	W11	1575	0	2360	Bedroom	
12	W12	2400	-	-	Shower	
13	W13	1640	0	0	Bedroom	
1	V1	800	800	2170	Toilets	
2	V1'	800	800	2360	WC	
3	V2	450	800	2170	WC	
3	V2'	450	800	2360	WC	
1	FD1	1100	-	2360	Fire door	
2	FD2	1000	-	2360	Fire door	
3	FDB	780	-	2360	Elect. room	
1	S1	1800	800	2360	SHAFT OPENING	
2	S2	800	800	2360	SHAFT OPENING	
3	S3	885	800	2360	SHAFT OPENING	
4	S4	885	800	2360	SHAFT OPENING	